



**November 17, 2023**

## **Transportation Statistics**

### **Fuel Prices**

U.S. National Average  
Regional Prices

### **Transportation Stocks**

### **Consumer Price Index**

Urban Consumers  
Urban Wage Earners

### **Producer Price Index**

### **Federal Reserve System**

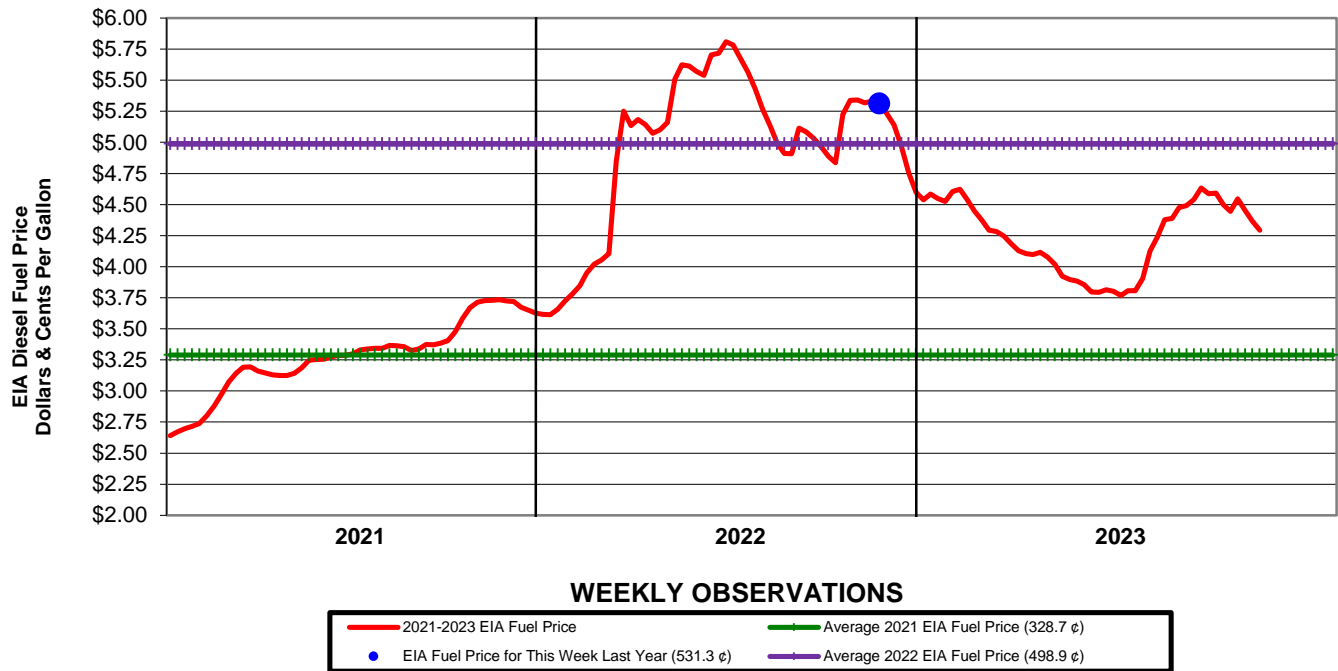
Industrial Production and Capacity Utilization

### **Department of Commerce**

Business Inventories / Sales Ratios  
Manufacturers' Ratios  
Retail Sales Ratios  
Merchant Wholesalers Ratios



**ENERGY INFORMATION ADMINISTRATION DIESEL FUEL PRICES  
NOVEMBER 13, 2023**

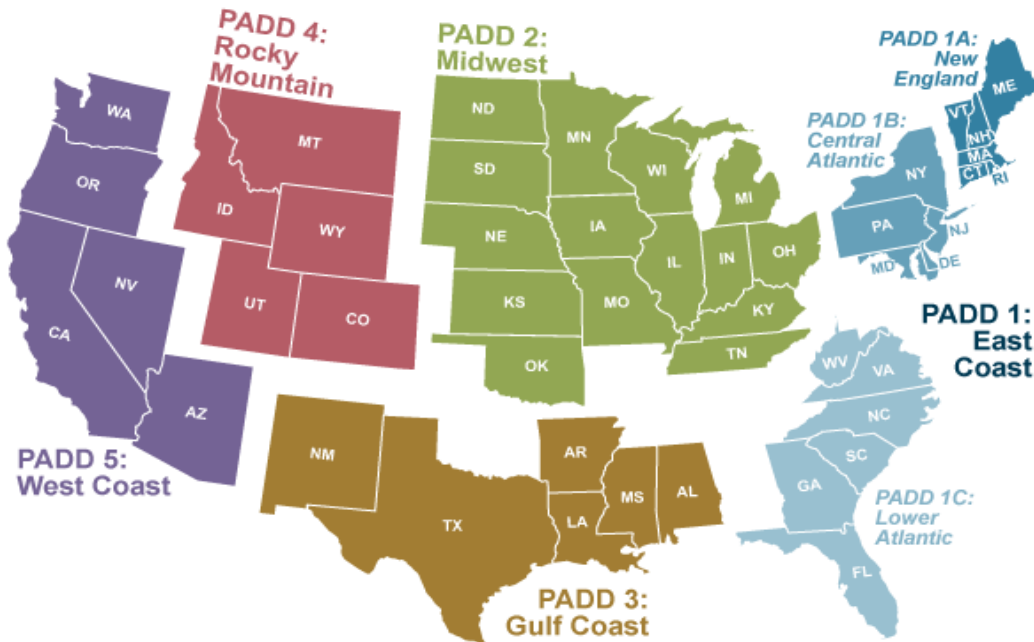


**EIA National On-Highway Diesel Fuel Prices - 2021 through Year to Date 2023**

2021		2022		2023		2021		2022		2023		2021		2022		2023	
Week	All ¢	Week	All ¢	Week	All ¢	Week	All ¢	Week	All ¢	Week	All ¢	Week	All ¢	Week	All ¢	Week	All ¢
Jan 4	264.0	Jul 5	333.1	Jan 3	361.3	Jul 4	567.5	Jan 2	458.3	Jul 3	376.7						
Jan 11	267.0	Jul 12	333.8	Jan 10	365.7	Jul 11	556.8	Jan 9	454.9	Jul 10	380.6						
Jan 18	269.6	Jul 19	334.4	Jan 17	372.5	Jul 18	543.2	Jan 16	452.4	Jul 17	380.6						
Jan 25	271.6	Jul 26	334.2	Jan 24	378.0	Jul 25	526.8	Jan 23	460.4	Jul 24	390.5						
Feb 1	273.8	Aug 2	336.7	Jan 31	384.6	Aug 1	513.8	Jan 30	462.2	Jul 31	412.7						
Feb 8	280.1	Aug 9	336.4	Feb 7	395.1	Aug 8	499.3	Feb 6	453.9	Aug 7	423.9						
Feb 15	287.6	Aug 16	335.6	Feb 14	401.9	Aug 15	491.1	Feb 13	444.4	Aug 14	437.8						
Feb 22	297.3	Aug 23	332.4	Feb 21	405.5	Aug 22	490.9	Feb 20	437.6	Aug 21	438.9						
Mar 1	307.2	Aug 30	333.9	Feb 28	410.4	Aug 29	511.5	Feb 27	429.4	Aug 28	447.5						
Mar 8	314.3	Sep 6	337.3	Mar 7	484.9	Sep 5	508.4	Mar 6	428.2	Sep 4	449.2						
Mar 15	319.1	Sep 13	337.2	Mar 14	525.0	Sep 12	503.3	Mar 13	424.7	Sep 11	454.0						
Mar 22	319.4	Sep 20	338.5	Mar 21	513.4	Sep 19	496.4	Mar 20	418.5	Sep 18	463.3						
Mar 29	316.1	Sep 27	340.6	Mar 28	518.5	Sep 26	488.9	Mar 27	412.8	Sep 25	458.6						
Apr 5	314.4	Oct 4	347.7	Apr 4	514.4	Oct 3	483.6	Apr 3	410.5	Oct 2	459.3						
Apr 12	312.9	Oct 11	358.6	Apr 11	507.3	Oct 10	522.4	Apr 10	409.8	Oct 9	449.8						
Apr 19	312.4	Oct 18	367.1	Apr 18	510.1	Oct 17	533.9	Apr 17	411.6	Oct 16	444.4						
Apr 26	312.4	Oct 25	371.3	Apr 25	516.0	Oct 24	534.1	Apr 24	407.7	Oct 23	454.5						
May 3	314.2	Nov 1	372.7	May 2	550.9	Oct 31	531.7	May 1	401.8	Oct 30	445.4						
May 10	318.6	Nov 8	373.0	May 9	562.3	Nov 7	533.3	May 8	392.2	Nov 6	436.6						
May 17	324.9	Nov 15	373.4	May 16	561.3	Nov 14	531.3	May 15	389.7	Nov 13	429.4						
May 24	325.3	Nov 22	372.4	May 23	557.1	Nov 21	523.3	May 22	388.3								
May 31	325.5	Nov 29	372.0	May 30	553.9	Nov 28	514.1	May 29	385.5								
Jun 7	327.4	Dec 6	367.4	Jun 6	570.3	Dec 5	496.7	Jun 5	379.7								
Jun 14	328.6	Dec 13	364.9	Jun 13	571.8	Dec 12	475.4	Jun 12	379.4								
Jun 21	328.7	Dec 20	362.6	Jun 20	581.0	Dec 19	459.6	Jun 19	381.5								
Jun 28	330.0	Dec 27	361.5	Jun 27	578.3	Dec 26	453.7	Jun 26	380.1								

All ¢ = Energy Information Administration All Types Weekly Diesel Price

**Energy Information Administration (EIA)  
Petroleum Administration for Defense Districts (PADD)  
REGIONAL FUEL PRICES - NOVEMBER 13, 2023**



REGION		10/23/2023	10/30/2023	11/6/2023	11/13/2023
U.S. Average Diesel Fuel Price (ALL)		454.5	445.4	436.6	429.4
This Week Last Year		534.1	531.7	533.3	531.3
Percentage Difference		-14.9	-16.2	-18.1	-19.2
East Coast (Regions 1A through 1C)	(PADD 1)	440.8	434.2	429.4	422.0
This Week Last Year		537.9	540.0	547.3	547.4
Percentage Difference		-18.1	-19.6	-21.5	-22.9
New England - CT, ME, MA, NH, RI, VT	(PADD 1A)	455.1	453.7	452.3	448.3
This Week Last Year		577.3	585.2	596.5	606.0
Percentage Difference		-21.2	-22.5	-24.2	-26.0
Central Atlantic - DE, DC, MD, NJ, NY, PA	(PADD 1B)	466.8	463.3	458.8	452.8
This Week Last Year		582.1	587.7	597.7	598.9
Percentage Difference		-19.8	-21.2	-23.2	-24.4
Lower Atlantic - FL, GA, NC, SC, VA, WV	(PADD 1C)	429.9	421.7	416.3	407.9
This Week Last Year		518.2	518.3	524.2	524.2
Percentage Difference		-17.0	-18.6	-20.6	-22.2
Midwest - IL, IN, IA, KS, KY, MI, MN, MO, NE, ND, OH, OK, SD, TN, WI	(PADD 2)	455.4	444.1	433.4	430.8
This Week Last Year		536.9	532.7	535.1	532.1
Percentage Difference		-15.2	-16.6	-19.0	-19.0
Gulf Coast - AL, AR, LA, MS, NM, TX	(PADD 3)	418.6	411.5	403.2	392.7
This Week Last Year		498.7	496.5	493.7	488.6
Percentage Difference		-16.1	-17.1	-18.3	-19.6
Rocky Mountain - CO, ID, MT, UT, WY	(PADD 4)	475.4	465.0	448.9	435.6
This Week Last Year		533.8	530.2	533.8	540.1
Percentage Difference		-10.9	-12.3	-15.9	-19.3
West Coast - AK, AZ, HI, NV, OR, WA, CA	(PADD 5)	546.8	534.8	525.8	513.9
This Week Last Year		587.6	581.0	576.4	576.9
Percentage Difference		-6.9	-8.0	-8.8	-10.9

**Transportation Stocks by Mode - Week Ending Wednesday - November 15, 2023**

Company	Symbol	Closing Price		Change in Week		Earn/ Share	P/E Ratio	Annual Dividend		52 Weeks	
		Nov 15	Nov 08	Net	Percent			Rate	Yield	High	Low
<b>LESS THAN TRUCKLOAD</b>											
ArcBest Corporation	ARCB	122.14	116.47	5.67	4.87	4.59	26.62	0.12	0.39	124.22	68.00
Forward Air Corporation	FWRD	66.47	64.61	1.86	2.88	4.08	16.27	0.24	1.44	121.38	60.09
Old Dominion Freight Line , Inc.	ODFL	402.74	390.15	12.59	3.23	11.23	35.85	0.40	0.40	438.05	277.49
Roadrunner Transportation Service	RRTS	2.01	1.65	0.36	21.82	na	na	na	na	3.15	1.00
Saia, Inc.	SAIA	417.63	388.99	28.64	7.36	12.59	33.18	na	na	443.85	204.02
<b>TRUCKLOAD</b>											
Covenant Logistics Group Inc.	CVLG	42.75	39.81	2.94	7.39	3.90	10.96	0.11	0.96	57.57	29.34
Daseke, Inc	DSKE	4.65	4.48	0.17	3.79	0.13	34.81	na	na	9.58	4.06
Heartland Express, Inc.	HTLD	13.29	12.35	0.94	7.61	0.32	41.74	0.02	0.60	18.17	11.44
J.B. Hunt Transport Svcs.	JBHT	181.94	174.58	7.36	4.22	7.42	24.53	0.42	0.92	209.21	163.66
Knight-Swift Transportation	KNX	53.21	50.11	3.10	6.19	2.33	22.87	0.14	1.05	64.35	45.73
Landstar System Inc.	LSTR	174.05	168.96	5.09	3.01	8.34	20.88	0.33	0.76	208.62	160.05
Marten Transport Ltd.	MRTN	19.00	17.83	1.17	6.56	1.03	18.53	0.06	1.26	23.38	17.34
Patriot Trans. Hldg., Inc.	PATI	15.70	15.66	0.04	0.26	0.73	21.47	3.75	na	15.81	6.95
P.A.M. Transportation Svcs.	PTSI	19.43	17.74	1.69	9.53	1.74	11.19	na	na	31.36	15.66
Schneider National Inc.	SNDR	23.13	21.77	1.36	6.25	1.80	12.87	0.09	1.56	31.74	21.39
Universal Logistics Holdings Inc.	ULH	25.35	23.27	2.08	8.94	3.99	6.36	0.10	1.66	45.00	20.85
Werner Enterprises, Inc.	WERN	39.51	36.85	2.66	7.22	2.34	16.89	0.14	1.42	50.31	35.02
<b>CONGLOMERATE TRANSPORTATION SERVICE COMPANIES</b>											
FedEx Corporation	FDX	257.42	245.37	12.05	4.91	15.18	16.96	1.26	1.96	270.95	162.61
United Parcel Service	UPS	147.17	141.95	5.22	3.68	9.89	14.89	1.62	4.40	197.80	133.68
<b>TRUCK LEASING/CONTRACT CARRIAGE</b>											
Ryder System, Inc.	R	106.26	100.93	5.33	5.28	10.18	10.43	0.71	2.67	107.90	76.15
<b>LOGISTICS</b>											
Americold Realty Trust	COLD	26.64	25.36	1.28	5.05	-0.38	na	0.22	3.30	33.90	24.31
C H Robinson Worldwide	CHRW	83.25	81.40	1.85	2.27	3.25	25.59	0.61	2.93	108.05	78.69
Expeditors International	EXPD	118.40	113.21	5.19	4.58	5.29	22.37	0.69	1.17	128.05	102.75
HUB Group	HUBG	76.11	71.10	5.01	7.05	6.70	11.35	na	na	104.67	63.45
Radiant Logistics	RLGT	6.05	5.83	0.22	3.77	0.30	20.17	na	na	7.76	4.93
XPO Logistics	XPO	85.68	81.79	3.89	4.76	0.29	296.68	na	na	88.16	29.02
Dow Jones US Trucking Index		201.58	194.10	7.48	3.85	na	na	na	na	na	na

### Transportation Stocks by Mode - Week Ending Wednesday - November 15, 2023

Company	Symbol	Closing Price		Change in Week		Earn/ Share	P/E Ratio	Annual Dividend		52 Weeks	
		Nov 15	Nov 08	Net	Percent			Rate	Yield	High	Low
<b>CANADIAN COMPANIES</b> (in Canadian Dollars)											
Clarke Inc.	CKI	13.31	13.43	-0.12	-0.89	-0.20	na	na	na	14.24	11.31
Drone Delivery Canada	FLT	0.19	0.26	-0.07	-26.92	-0.04	na	na	na	0.54	0.16
Mullen Transportation	MTL	13.35	13.27	0.08	0.60	1.75	7.62	0.06	5.39	16.43	12.82
Pudo Inc.	PDPTF	0.44	0.44	0.00	0.00	-0.01	na	na	na	1.63	0.37
TransForce Income Fund	TFII	159.86	154.11	5.75	3.73	8.12	19.69	0.47	0.88	188.44	133.66
Titanium Transportation Group	TTNM	2.34	2.51	-0.17	-6.77	0.30	7.81	0.02	3.42	3.38	2.00

Currency Exchange Rates	Per U. S. Dollar		Change in Week	
	Nov 15	Nov 08	Net	Percent
Canadian Dollar	1.3683	1.3794	-0.0111	-0.80
Mexican Peso	17.2962	17.5362	-0.2400	-1.37
Chinese Yuan	7.2468	7.2803	-0.0335	-0.46
Japanese Yen	151.3900	150.9800	0.4100	0.27
Euro	0.9219	0.9336	-0.0117	-1.25
Swiss Franc	0.8882	0.8994	-0.0112	-1.25
British Pound	0.8053	0.8139	-0.0086	-1.06

Price of Money				
Nov 15	Nov 08	Change in Week		Last
Prime Rate		Net	Percent	Change
8.50	8.50	0.00	0.00	07/27/23
Discount Rate				
5.50	5.50	0.00	0.00	07/27/23

Stock Indices	Average		Change in Week		52 Weeks			YTD
	Nov 15	Nov 08	Net	Percent	High	Low	Chg.%	Chg.%
Dow Jones Transportation Average	14,961.98	14,415.78	546.2	3.79	16,717.04	13,230.05	4.58	11.72
Dow Jones Industrial Average	34,991.21	34,112.27	878.94	2.58	35,679.13	31,429.82	4.28	5.56
Nasdaq Composite	14,103.84	13,650.41	453.43	3.32	14,446.55	10,207.47	26.11	34.75
Standard & Poor's Stock 500 Index	4,502.88	4,382.78	120.1	2.74	4,607.07	3,764.49	13.74	17.28
N.Y.S.E. Composite	15,765.02	15,352.19	412.83	2.69	16,458.89	14,471.08	3.55	3.82

Commodities	Closing Price		Change in Week		Year Ago	Change in Year	
	Nov 15	Nov 08	Net	Percent		Net	Percent
Precious metals, per Troy oz.							
Gold (NYMEX) Engelhard industrial bullion	1965.00	1966.00	-1.00	-0.05	1781.00	184.00	10.33
Silver (NYMEX) Engelhard industrial bullion	23.40	22.95	0.45	1.96	23.50	-0.10	-0.43
Crude Oil, per Barrel							
Domestic							
West Texas intermediate	76.66	75.33	1.33	1.77	86.92	-10.26	-11.80
Offshore							
Brent	81.18	79.54	1.64	2.06	93.86	-12.68	-13.51

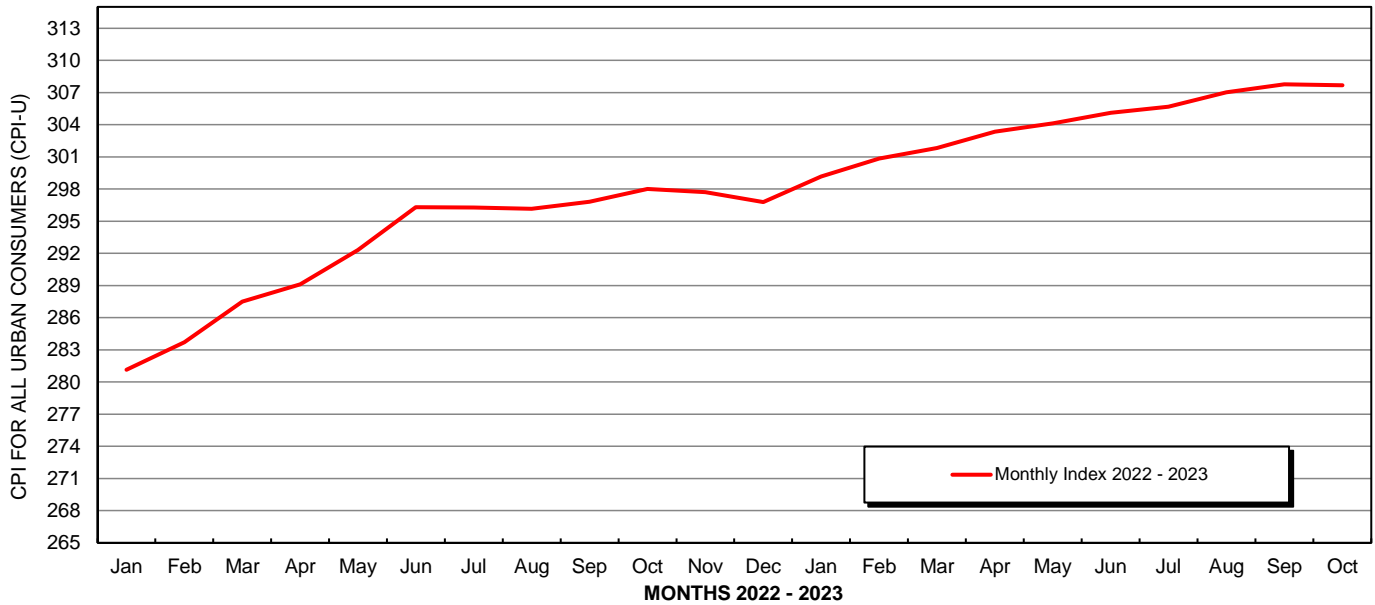
## CONSUMER PRICE INDEX FOR ALL URBAN CONSUMERS

Published By  
**U.S. Department Of Labor - Bureau of Labor Statistics**  
 BASE YEAR INDEX 1982-1984=100

Mo\Yr	2012	2013	2014	2015	2016	2017	2018	2019	2020	2021	2022	% Change 2022 / 2021	2023	% Change 2023 / 2022
<b>JAN</b>	226.7	230.3	233.9	233.7	236.9	242.8	247.9	251.7	258.0	261.58	281.148	7.48	299.170	6.41
<b>FEB</b>	227.7	232.2	234.8	234.7	237.1	243.6	249.0	252.8	258.7	263.01	283.716	7.87	300.840	6.04
<b>MAR</b>	229.4	232.8	236.3	236.1	238.1	243.8	249.6	254.2	258.1	264.88	287.504	8.54	301.836	4.98
<b>APR</b>	230.1	232.5	237.1	236.6	239.3	244.5	250.5	255.5	256.4	267.05	289.109	8.26	303.363	4.93
<b>MAY</b>	229.8	232.9	237.9	237.8	240.2	244.7	251.6	256.1	256.4	269.20	292.296	8.58	304.127	4.05
<b>JUN</b>	229.5	233.5	238.3	238.6	241.0	245.0	252.0	256.1	257.8	271.70	296.311	9.06	305.109	2.97
<b>JUL</b>	229.1	233.6	238.3	238.7	240.6	244.8	252.0	256.6	259.1	273.00	296.276	8.52	305.691	3.18
<b>AUG</b>	230.4	233.9	237.9	238.3	240.8	245.5	252.1	256.6	259.9	273.57	296.171	8.26	307.026	3.67
<b>SEP</b>	231.4	234.1	238.0	237.9	241.4	246.8	252.4	256.8	260.3	274.31	296.808	8.20	307.789	3.70
<b>OCT</b>	231.3	233.5	237.4	237.8	241.7	246.7	252.9	257.3	260.4	276.59	298.012	7.75	307.671	3.24
<b>NOV</b>	230.2	233.1	236.2	237.3	241.4	246.7	252.0	257.2	260.2	277.95	297.711	7.11		
<b>DEC</b>	229.6	233.0	234.8	236.5	241.4	246.5	251.2	257.0	260.5	278.80	296.797	6.45		
<b>AVG</b>	229.6	233.0	236.7	237.0	240.0	245.1	251.1	255.7	258.8	270.97	292.655	8.00	304.262	3.97
<b>%CHG</b>	2.07	1.46	1.62	0.12	1.26	2.13	2.44	1.81	1.23	4.70	8.00	-	3.97	-

### CONSUMER PRICE INDEX FOR ALL URBAN CONSUMERS (CPI-U)

Base Year Index 1982-1984 = 100



NOTE: Consumer Price Index data for November 2023 is scheduled for release on Tuesday, December 12, 2023, at 8:30 A.M. (E.S.T.)

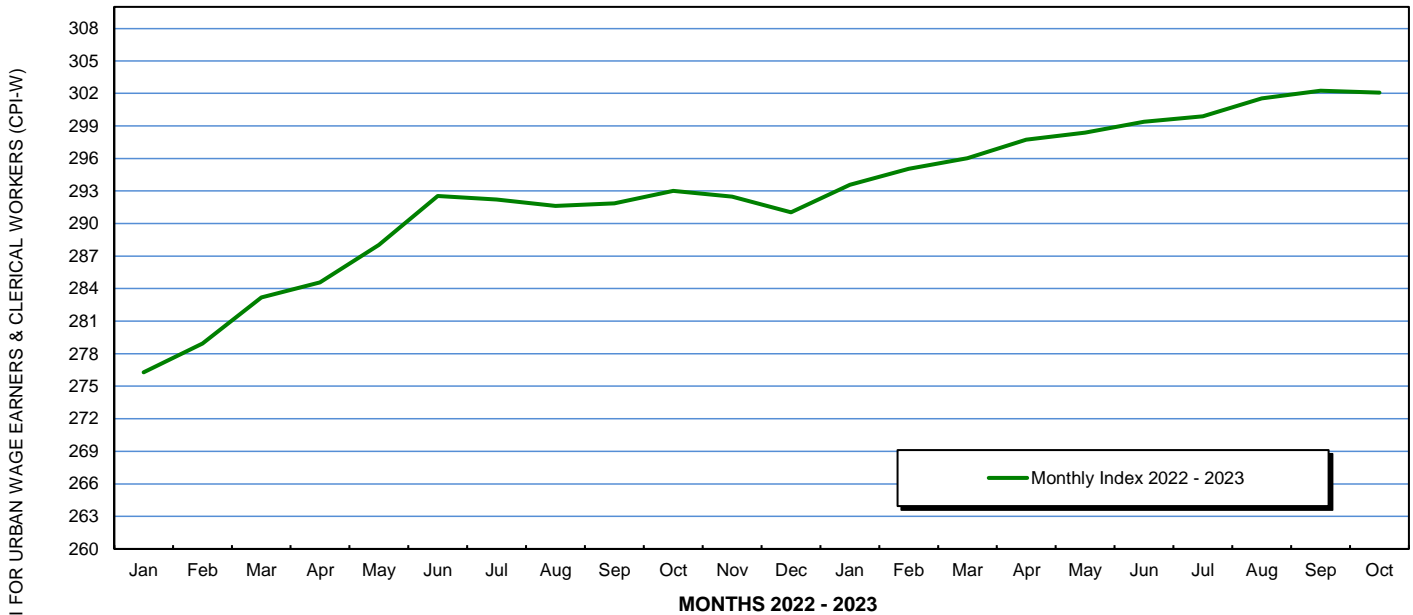
## CONSUMER PRICE INDEX FOR URBAN WAGE EARNERS AND CLERICAL WORKERS

Published By  
**U.S. Department Of Labor - Bureau of Labor Statistics**  
 BASE YEAR INDEX 1982-1984=100

Mo\Yr	2012	2013	2014	2015	2016	2017	2018	2019	2020	2021	2022	% Change 2022 / 2021	2023	% Change 2023 / 2022
<b>JAN</b>	223.2	226.5	230.0	228.3	231.1	236.9	241.9	245.1	251.4	255.30	276.296	8.23	293.565	6.25
<b>FEB</b>	224.3	228.7	230.9	229.4	231.0	237.5	243.0	246.2	251.9	256.84	278.943	8.60	295.057	5.78
<b>MAR</b>	226.3	229.3	232.6	231.1	232.2	237.7	243.5	247.8	251.4	258.94	283.176	9.36	296.021	4.54
<b>APR</b>	227.0	228.9	233.4	231.5	233.4	238.4	244.6	249.3	249.5	261.24	284.575	8.93	297.730	4.62
<b>MAY</b>	226.6	229.4	234.2	232.9	234.4	238.6	245.8	249.9	249.5	263.61	288.022	9.26	298.382	3.60
<b>JUN</b>	226.0	230.0	234.7	233.8	235.3	238.8	246.2	249.7	251.1	266.41	292.542	9.81	299.394	2.34
<b>JUL</b>	225.6	230.1	234.5	233.8	234.8	238.6	246.2	250.2	252.6	267.79	292.219	9.12	299.899	2.63
<b>AUG</b>	227.1	230.4	234.0	233.4	234.9	239.4	246.3	250.1	253.6	268.39	291.629	8.66	301.551	3.40
<b>SEP</b>	228.2	230.5	234.2	232.7	235.5	240.9	246.6	250.3	254.0	269.09	291.854	8.46	302.257	3.56
<b>OCT</b>	228.0	229.7	233.2	232.4	235.7	240.6	247.0	250.9	254.1	271.55	293.003	7.90	302.071	3.09
<b>NOV</b>	226.6	229.1	231.6	231.7	235.2	240.7	245.9	250.6	253.8	273.04	292.495	7.12		
<b>DEC</b>	225.9	229.2	229.9	230.8	235.4	240.5	244.8	250.5	254.1	273.93	291.051	6.25		
<b>AVG</b>	226.2	229.3	232.8	231.8	234.1	239.1	245.1	249.2	252.2	265.51	287.984	8.46	298.593	3.68
<b>%CHG</b>	2.10	1.37	1.50	-0.41	0.98	2.13	2.55	1.66	1.21	5.26	8.46	-	3.68	-

### CONSUMER PRICE INDEX FOR URBAN WAGE EARNERS AND CLERICAL WORKERS (CPI-W)

Base Year Index 1982-1984 = 100



NOTE: Consumer Price Index data for November 2023 is scheduled for release on Tuesday, December 12, 2023, at 8:30 A.M. (E.S.T.)

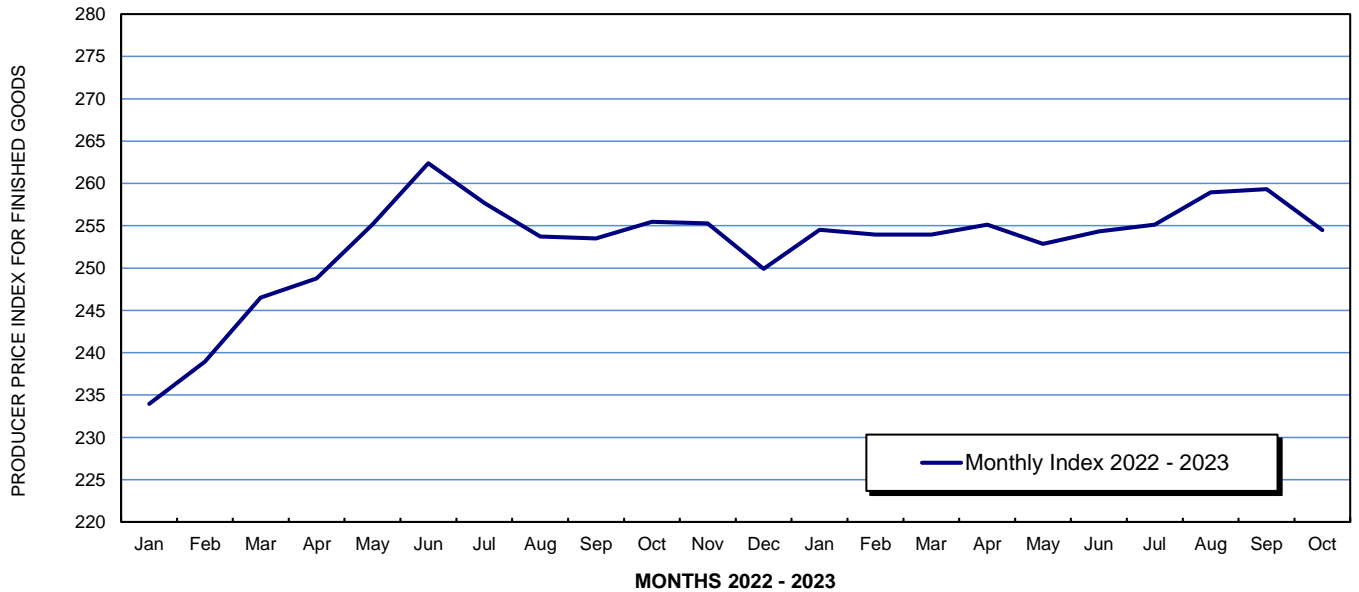
## PRODUCER PRICE INDEX FOR FINISHED GOODS

Published By  
**U.S. Department Of Labor - Bureau of Labor Statistics**  
 BASE YEAR INDEX 1982=100

Mo\Yr	2012	2013	2014	2015	2016	2017	2018	2019	2020	2021	2022	% Change 2022 / 2021	2023	% Change 2023 / 2022
<b>JAN</b>	192.1	194.9	198.1	192.2	189.9	195.4	201.0	201.8	206.8	207.6	233.941	12.69	254.522	8.80
<b>FEB</b>	193.0	196.4	198.9	192.6	188.8	196.0	201.3	202.4	205.0	210.1	238.956	13.73	253.956	6.28
<b>MAR</b>	194.5	196.7	200.3	193.6	189.2	196.3	202.1	204.9	201.8	213.8	246.495	15.29	253.942	3.02
<b>APR</b>	195.0	196.0	202.1	193.1	190.3	198.0	202.8	207.1	196.1	215.1	248.781	15.66	255.140	2.56
<b>MAY</b>	193.8	196.9	201.8	196.0	191.7	197.0	205.0	207.6	200.9	218.4	255.183	16.84	252.855	-0.91
<b>JUN</b>	192.9	197.3	202.9	197.7	193.8	197.8	205.9	206.9	202.2	221.8	262.394	18.30	254.316	-3.08
<b>JUL</b>	193.3	197.3	203.0	197.4	193.5	197.6	206.0	207.4	203.3	223.5	257.709	15.33	255.116	-1.01
<b>AUG</b>	195.5	197.9	202.5	196.3	192.6	198.4	205.8	206.4	203.2	225.0	253.744	12.80	258.951	2.05
<b>SEP</b>	196.9	197.3	201.7	193.4	193.2	199.6	205.9	205.7	203.3	227.2	253.501	11.56	259.326	2.30
<b>OCT</b>	196.4	196.9	200.4	192.4	193.7	199.4	206.7	206.3	203.8	229.7	255.481	11.23	254.484	-0.39
<b>NOV</b>	194.5	196.1	198.2	191.6	192.4	200.4	204.4	206.4	203.8	231.0	255.268	10.52		
<b>DEC</b>	193.8	196.5	195.4	190.1	193.7	199.9	202.5	206.0	204.4	229.4	249.919	8.92		
<b>AVG</b>	194.3	196.7	200.4	193.9	191.9	198.0	204.1	205.7	202.9	221.0	250.948	13.53	255.261	1.72
<b>%CHG</b>	1.89	1.22	1.91	-3.28	-1.01	3.17	3.10	0.80	-1.39	8.95	13.53	-	1.72	-

### PRODUCER PRICE INDEX FOR FINISHED GOODS

Base Year Index 1982 = 100



**NOTE:** Producer Price Index data for November 2023 is scheduled for release on Wednesday, December 13, 2023, at 8:30 A.M. (E.S.T.)

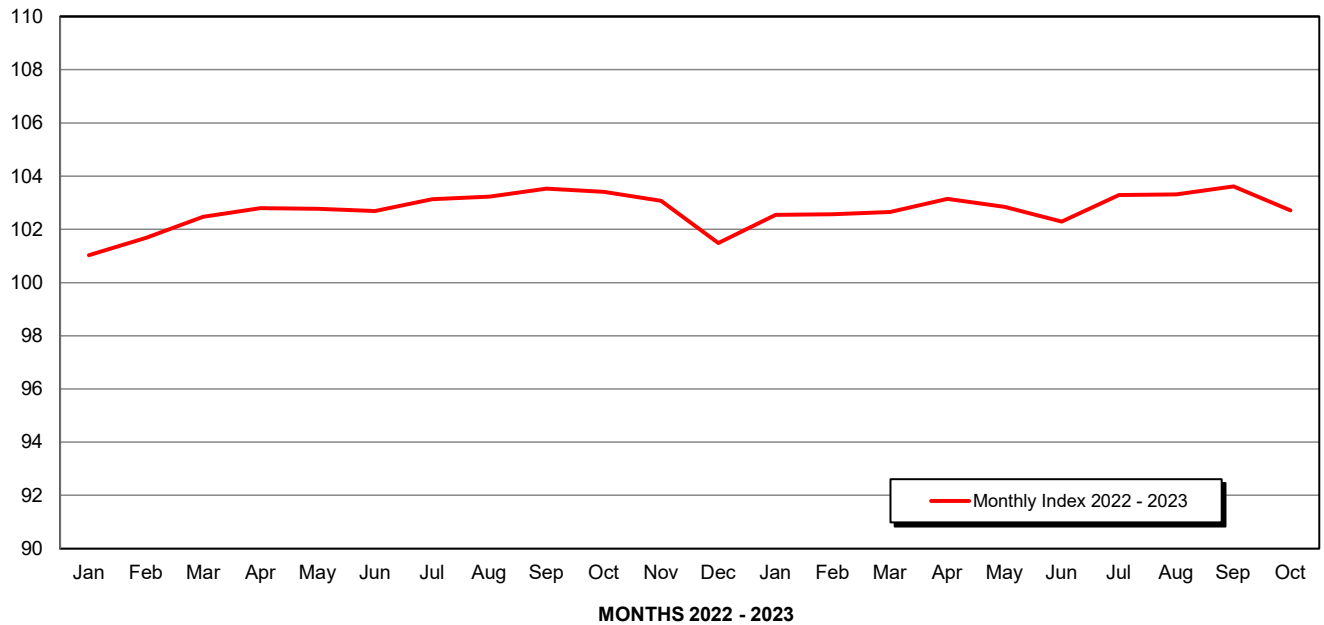


## Industrial Production and Capacity Utilization - G.17

Published By  
**Federal Reserve Board**  
 BASE YEAR INDEX 2017=100

Mo\Yr	2012	2013	2014	2015	2016	2017	2018	2019	2020	2021	2022	% Change 2022 / 2021	2023	% Change 2023 / 2022
<b>JAN</b>	96.7790	98.2029	99.9990	102.8239	99.4558	98.7987	101.3939	103.3730	101.3768	98.7836	101.0227	2.27	102.5478	1.51
<b>FEB</b>	97.0959	98.6733	100.7583	102.1513	98.9136	98.4322	101.7656	102.8292	101.6330	95.3744	101.6766	6.61	102.5671	0.88
<b>MAR</b>	96.5919	99.0788	101.7767	101.8240	98.1907	99.0663	102.2441	102.8286	97.6672	98.1351	102.4780	4.43	102.6592	0.18
<b>APR</b>	97.2942	98.9658	101.8425	101.2440	98.4669	100.0082	103.3468	102.2481	84.5979	98.2886	102.7953	4.59	103.1512	0.35
<b>MAY</b>	97.4853	99.0567	102.2594	100.7830	98.2518	100.1286	102.3911	102.4192	85.9732	99.1508	102.7769	3.66	102.9240	0.14
<b>JUN</b>	97.4959	99.2424	102.5986	100.4781	98.7275	100.3233	103.1924	102.4893	91.5625	99.5096	102.6863	3.19	102.3030	-0.37
<b>JUL</b>	97.6922	98.9258	102.8163	101.1052	98.8360	100.0947	103.3334	102.0236	95.0144	100.1231	103.1328	3.01	103.2670	0.13
<b>AUG</b>	97.3061	99.5059	102.6562	100.9442	98.7554	99.6642	104.0807	102.7754	95.8881	100.1255	103.2344	3.11	103.2927	0.06
<b>SEP</b>	97.2383	100.0391	102.9776	100.6507	98.6596	99.7686	104.1181	102.5315	95.8444	99.0614	103.5283	4.51	103.3643	-0.16
<b>OCT</b>	97.5425	99.9203	102.9892	100.1871	98.7322	100.9981	103.9397	101.6022	96.4292	100.3045	103.4114	3.10	102.7081	-0.68
<b>NOV</b>	97.9340	100.1661	103.6402	99.4382	98.3452	101.2597	104.0007	102.1480	96.8564	101.1971	103.0707	1.85		
<b>DEC</b>	98.1984	100.3777	103.6345	98.9390	99.0314	101.4573	103.9946	101.8840	97.9754	100.8860	101.4848	0.59		
<b>AVG</b>	97.3878	99.3462	102.3290	100.8807	98.6972	100.0000	103.1501	102.4293	95.0682	99.2450	102.6082	3.39	102.8784	0.26
<b>%CHG</b>	3.05	2.01	3.00	-1.42	-2.16	1.32	3.15	-0.70	-7.19	4.39	3.39	-	0.26	-

**INDUSTRIAL PRODUCTION AND CAPACITY UTILIZATION (G.17)**  
 Base Year Index 2017 = 100



**NOTE: Industrial Production and Capacity Utilization Index data for November 2023 is scheduled for release on Friday, December 15, 2023, at 9:15 A.M. (E.S.T.)**

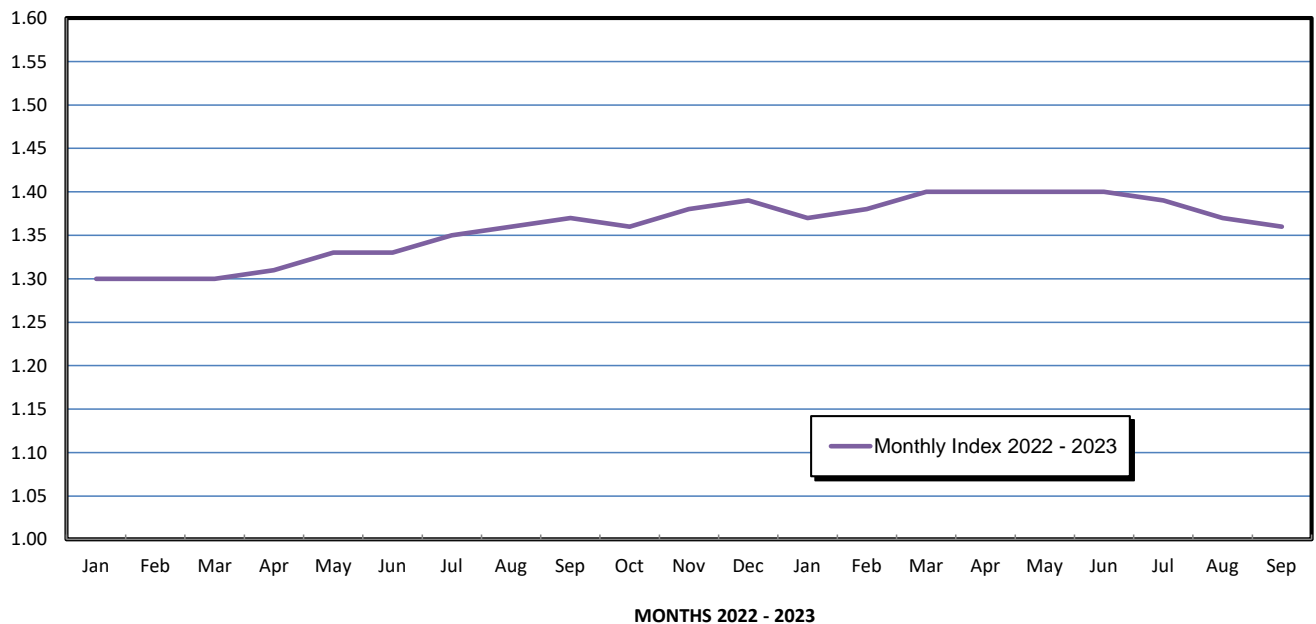
## TOTAL BUSINESS INVENTORIES/SALES RATIOS - 2012 TO 2023

Published By  
**U.S. Census Bureau - U.S. Department of Commerce**  
 Adjusted

Mo\Yr	2012	2013	2014	2015	2016	2017	2018	2019	2020	2021	2022	% Change 2022 / 2021	2023	% Change 2023 / 2022
JAN	1.25	1.29	1.32	1.38	1.44	1.39	1.37	1.42	1.43	1.31	1.30	-0.76	1.37	5.38
FEB	1.25	1.27	1.31	1.39	1.43	1.39	1.37	1.41	1.43	1.34	1.30	-2.99	1.38	6.15
MAR	1.26	1.29	1.31	1.38	1.43	1.40	1.37	1.40	1.51	1.28	1.30	1.56	1.40	7.69
APR	1.26	1.30	1.30	1.38	1.43	1.39	1.36	1.41	1.74	1.27	1.31	3.15	1.40	6.87
MAY	1.27	1.28	1.31	1.38	1.43	1.40	1.34	1.41	1.56	1.27	1.33	4.72	1.40	5.26
JUN	1.30	1.29	1.31	1.38	1.41	1.40	1.35	1.42	1.42	1.27	1.33	4.72	1.40	5.26
JUL	1.30	1.29	1.30	1.38	1.42	1.41	1.35	1.42	1.37	1.27	1.35	6.30	1.39	2.96
AUG	1.30	1.29	1.31	1.40	1.42	1.40	1.36	1.42	1.36	1.28	1.36	6.25	1.37	0.74
SEP	1.29	1.30	1.32	1.40	1.41	1.38	1.36	1.43	1.36	1.28	1.37	7.03	1.36	-0.73
OCT	1.29	1.30	1.32	1.41	1.41	1.37	1.36	1.44	1.36	1.27	1.36	7.09		
NOV	1.29	1.30	1.34	1.41	1.42	1.36	1.37	1.43	1.36	1.28	1.38	7.81		
DEC	1.29	1.30	1.35	1.43	1.39	1.35	1.40	1.43	1.34	1.31	1.39	6.11		
AVG	1.28	1.29	1.32	1.39	1.42	1.39	1.36	1.42	1.44	1.29	1.34	4.21	1.39	3.40
%CHG	1.39	0.98	1.94	5.82	1.91	-2.35	-1.68	4.16	1.17	-10.50	4.21	-	3.40	-

### Total Business Inventories/Sales Ratios

Provides a broad and timely measure of combined changes in manufacturing, domestic retail trade,  
and wholesale activities



NOTE: Manufacturing and Trade Inventories and Sales Report for October 2023 is scheduled for release on Thursday, December 14, 2023, at 10:00 A.M. (E.S.T.)

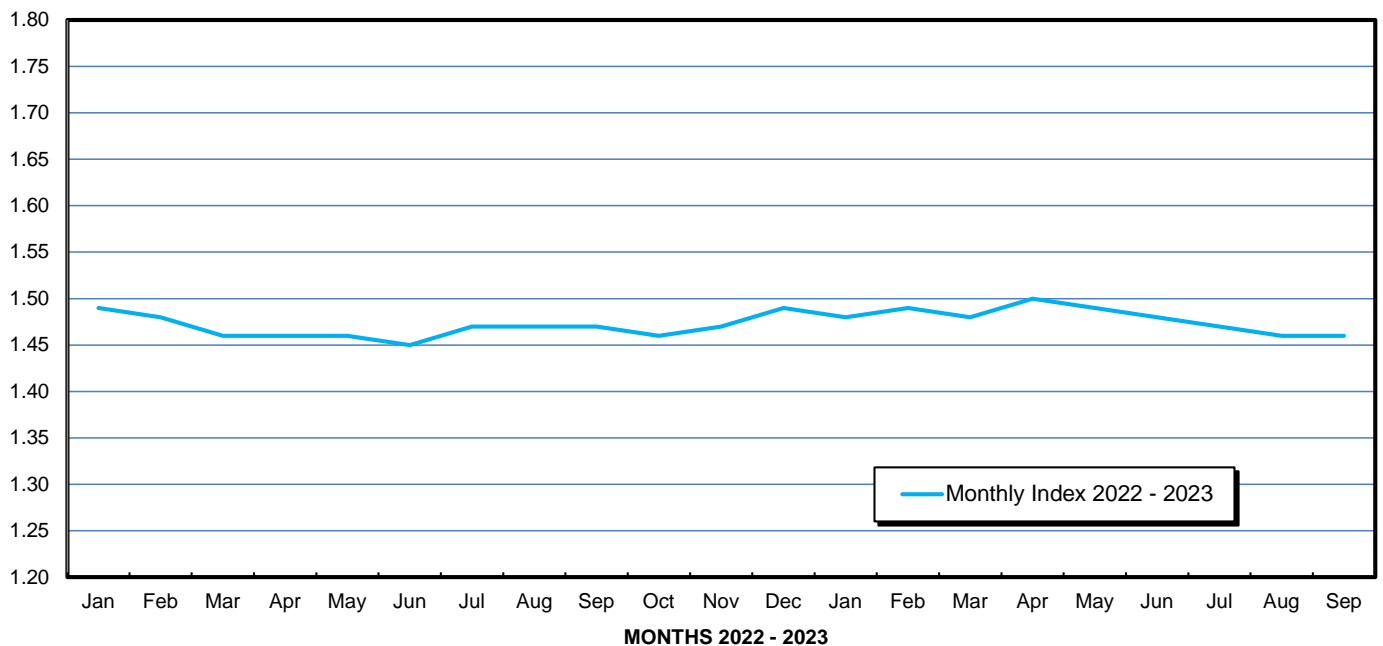
## TOTAL MANUFACTURERS' RATIOS - 2012 TO 2023

Published By  
**U.S. Census Bureau - U.S. Department of Commerce**  
 Adjusted

Mo\Yr	2012	2013	2014	2015	2016	2017	2018	2019	2020	2021	2022	% Change 2022 / 2021	2023	% Change 2023 / 2022
<b>JAN</b>	1.28	1.30	1.30	1.39	1.43	1.39	1.37	1.40	1.55	1.48	1.49	0.68	1.48	-0.67
<b>FEB</b>	1.28	1.28	1.29	1.38	1.43	1.40	1.37	1.40	1.54	1.51	1.48	-1.99	1.49	0.68
<b>MAR</b>	1.29	1.31	1.30	1.37	1.43	1.39	1.37	1.41	1.62	1.50	1.46	-2.67	1.48	1.37
<b>APR</b>	1.29	1.31	1.30	1.37	1.42	1.40	1.37	1.42	1.89	1.50	1.46	-2.67	1.50	2.74
<b>MAY</b>	1.29	1.29	1.31	1.39	1.42	1.39	1.35	1.42	1.84	1.50	1.46	-2.67	1.49	2.05
<b>JUN</b>	1.32	1.30	1.31	1.39	1.41	1.40	1.35	1.44	1.66	1.49	1.45	-2.68	1.48	2.07
<b>JUL</b>	1.32	1.30	1.30	1.39	1.42	1.40	1.37	1.46	1.59	1.48	1.47	-0.68	1.47	0.00
<b>AUG</b>	1.31	1.30	1.31	1.40	1.42	1.39	1.36	1.47	1.57	1.49	1.47	-1.34	1.46	-0.68
<b>SEP</b>	1.31	1.30	1.32	1.40	1.41	1.39	1.36	1.48	1.56	1.50	1.47	-2.00	1.46	-0.68
<b>OCT</b>	1.31	1.30	1.33	1.41	1.41	1.39	1.36	1.50	1.55	1.49	1.46	-2.01		
<b>NOV</b>	1.30	1.28	1.35	1.41	1.42	1.37	1.38	1.52	1.54	1.49	1.47	-1.34		
<b>DEC</b>	1.30	1.29	1.35	1.44	1.39	1.38	1.39	1.53	1.51	1.49	1.49	0.00		
<b>AVG</b>	1.30	1.30	1.31	1.40	1.42	1.39	1.37	1.45	1.62	1.49	1.47	-1.62	1.48	0.66
<b>%CHG</b>	1.17	-0.26	1.35	6.15	1.61	-1.88	-1.74	6.40	11.29	-7.72	-1.62	-	0.66	-

### Total Manufacturers' Ratios

Provides a broad and timely measure of changes in manufacturing output



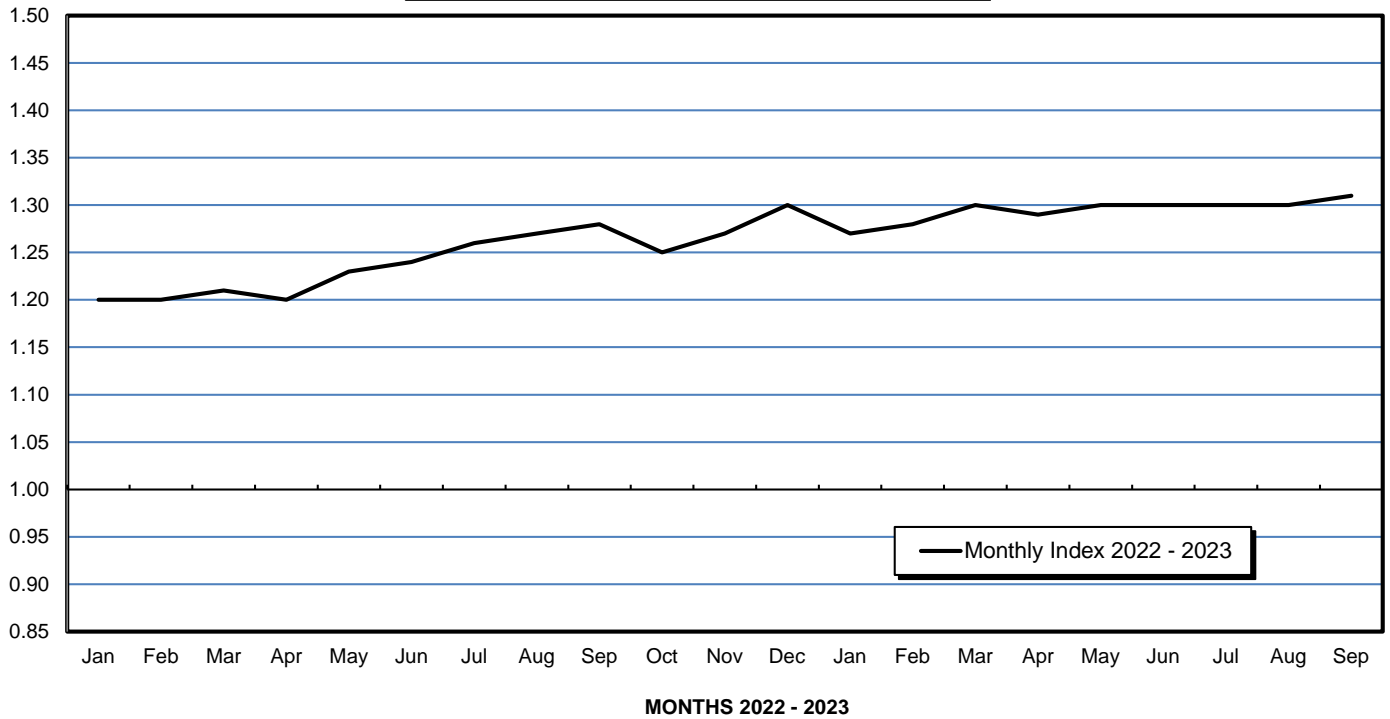
**NOTE: Manufacturing and Trade Inventories and Sales Report for October 2023 is scheduled for release on Thursday, December 14, 2023, at 10:00 A.M. (E.S.T.)**

## TOTAL RETAIL SALES RATIOS - 2012 TO 2023

Published By  
**U.S. Census Bureau - U.S. Department of Commerce**  
 Adjusted

Mo\Yr	2012	2013	2014	2015	2016	2017	2018	2019	2020	2021	2022	% Change 2022 / 2021	2023	% Change 2023 / 2022
JAN	1.34	1.40	1.46	1.45	1.50	1.47	1.45	1.50	1.44	1.23	1.20	-2.44	1.27	5.83
FEB	1.34	1.39	1.44	1.46	1.49	1.48	1.45	1.50	1.43	1.26	1.20	-4.76	1.28	6.67
MAR	1.34	1.39	1.43	1.44	1.51	1.49	1.45	1.47	1.53	1.12	1.21	8.04	1.30	7.44
APR	1.36	1.41	1.42	1.45	1.50	1.48	1.45	1.48	1.68	1.10	1.20	9.09	1.29	7.50
MAY	1.38	1.40	1.42	1.44	1.50	1.49	1.44	1.47	1.34	1.11	1.23	10.81	1.30	5.69
JUN	1.40	1.41	1.42	1.45	1.49	1.49	1.45	1.47	1.22	1.11	1.24	11.71	1.30	4.84
JUL	1.41	1.40	1.43	1.44	1.49	1.49	1.45	1.46	1.22	1.14	1.26	10.53	1.30	3.17
AUG	1.39	1.41	1.42	1.45	1.50	1.50	1.46	1.45	1.22	1.14	1.27	11.40	1.30	2.36
SEP	1.39	1.42	1.43	1.47	1.49	1.46	1.46	1.47	1.22	1.13	1.28	13.27	1.31	2.34
OCT	1.39	1.43	1.43	1.49	1.49	1.46	1.46	1.46	1.24	1.12	1.25	11.61		
NOV	1.39	1.45	1.43	1.48	1.51	1.45	1.45	1.44	1.26	1.13	1.27	12.39		
DEC	1.39	1.45	1.45	1.48	1.48	1.44	1.50	1.43	1.26	1.19	1.30	9.24		
AVG	1.38	1.41	1.43	1.46	1.50	1.48	1.46	1.47	1.34	1.15	1.24	8.20	1.29	4.18
%CHG	1.66	2.66	1.30	1.86	2.57	-1.39	-1.30	0.74	-8.75	-14.20	8.20	-	4.18	-

**Total Retail Sales Ratios**  
 Provides a broad and timely measure of changes in retail sales



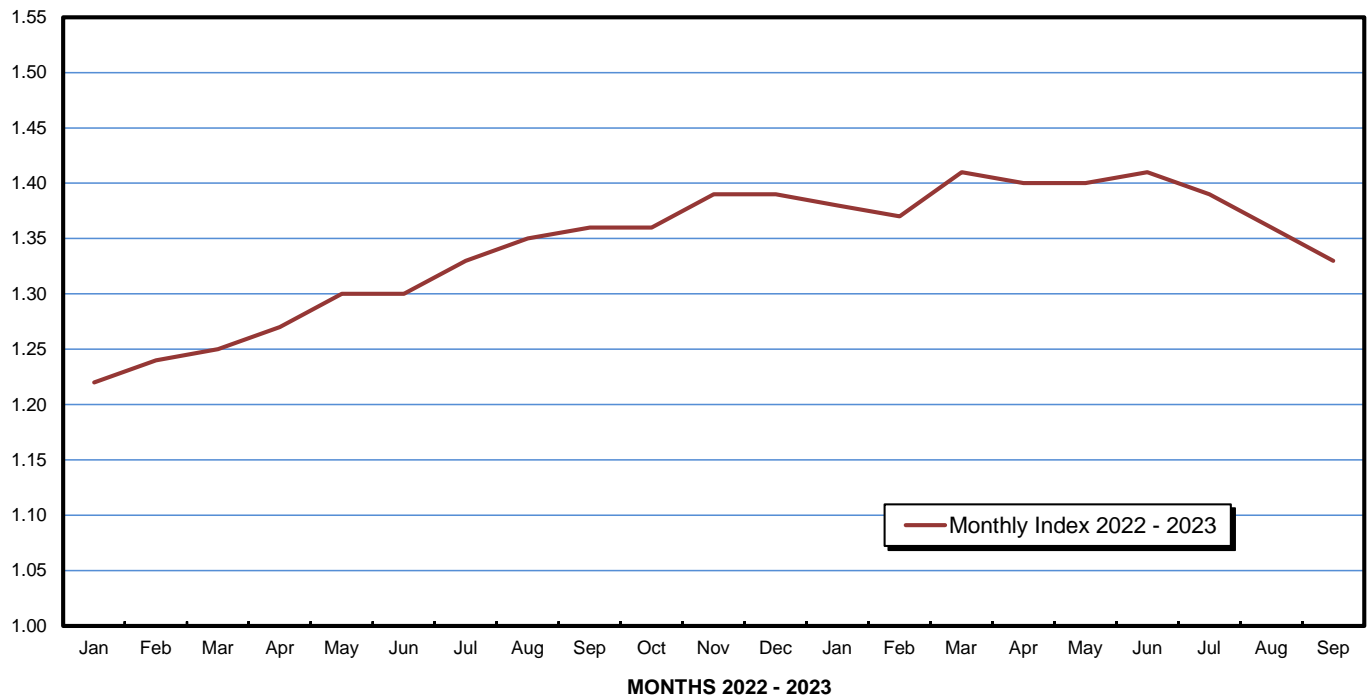
NOTE: Manufacturing and Trade Inventories and Sales Report for October 2023 is scheduled for release on Thursday, December 14, 2023, at 10:00 A.M. (E.S.T.)

## TOTAL MERCHANT WHOLESALERS RATIOS - 2012 TO 2023

Published By  
**U.S. Census Bureau - U.S. Department of Commerce**  
 Adjusted

Mo\Yr	2012	2013	2014	2015	2016	2017	2018	2019	2020	2021	2022	% Change 2022 / 2021	2023	% Change 2023 / 2022
<b>JAN</b>	1.15	1.19	1.22	1.30	1.38	1.31	1.29	1.35	1.32	1.24	1.22	-1.61	1.38	13.11
<b>FEB</b>	1.15	1.18	1.22	1.32	1.38	1.31	1.29	1.35	1.32	1.27	1.24	-2.36	1.37	10.48
<b>MAR</b>	1.15	1.19	1.21	1.33	1.37	1.32	1.30	1.34	1.39	1.24	1.25	0.81	1.41	12.80
<b>APR</b>	1.14	1.21	1.21	1.32	1.37	1.31	1.28	1.35	1.67	1.23	1.27	3.25	1.40	10.24
<b>MAY</b>	1.17	1.18	1.20	1.32	1.38	1.33	1.25	1.34	1.55	1.24	1.30	4.84	1.40	7.69
<b>JUN</b>	1.19	1.18	1.21	1.33	1.35	1.33	1.26	1.36	1.40	1.23	1.30	5.69	1.41	8.46
<b>JUL</b>	1.20	1.19	1.20	1.33	1.35	1.33	1.26	1.35	1.33	1.21	1.33	9.92	1.39	4.51
<b>AUG</b>	1.20	1.19	1.22	1.34	1.34	1.32	1.27	1.35	1.31	1.23	1.35	9.76	1.36	0.74
<b>SEP</b>	1.19	1.19	1.22	1.34	1.35	1.31	1.28	1.35	1.32	1.23	1.36	10.57	1.33	-2.21
<b>OCT</b>	1.20	1.19	1.23	1.34	1.33	1.29	1.28	1.36	1.30	1.23	1.36	10.57		
<b>NOV</b>	1.19	1.19	1.25	1.36	1.34	1.28	1.30	1.34	1.30	1.23	1.39	13.01		
<b>DEC</b>	1.19	1.19	1.27	1.36	1.32	1.25	1.33	1.34	1.28	1.25	1.39	11.20		
<b>AVG</b>	1.18	1.19	1.22	1.33	1.36	1.31	1.28	1.35	1.37	1.24	1.31	6.27	1.38	5.33
<b>%CHG</b>	1.95	1.06	2.73	9.07	1.69	-3.51	-1.91	5.13	1.92	-10.07	6.27	-	5.33	-

**Total Merchant Wholesalers' Ratios**  
 Provides a broad and timely measure of changes in wholesale trade



**NOTE: Manufacturing and Trade Inventories and Sales Report for October 2023 is scheduled for release on Thursday, December 14, 2023, at 10:00 A.M. (E.S.T.)**