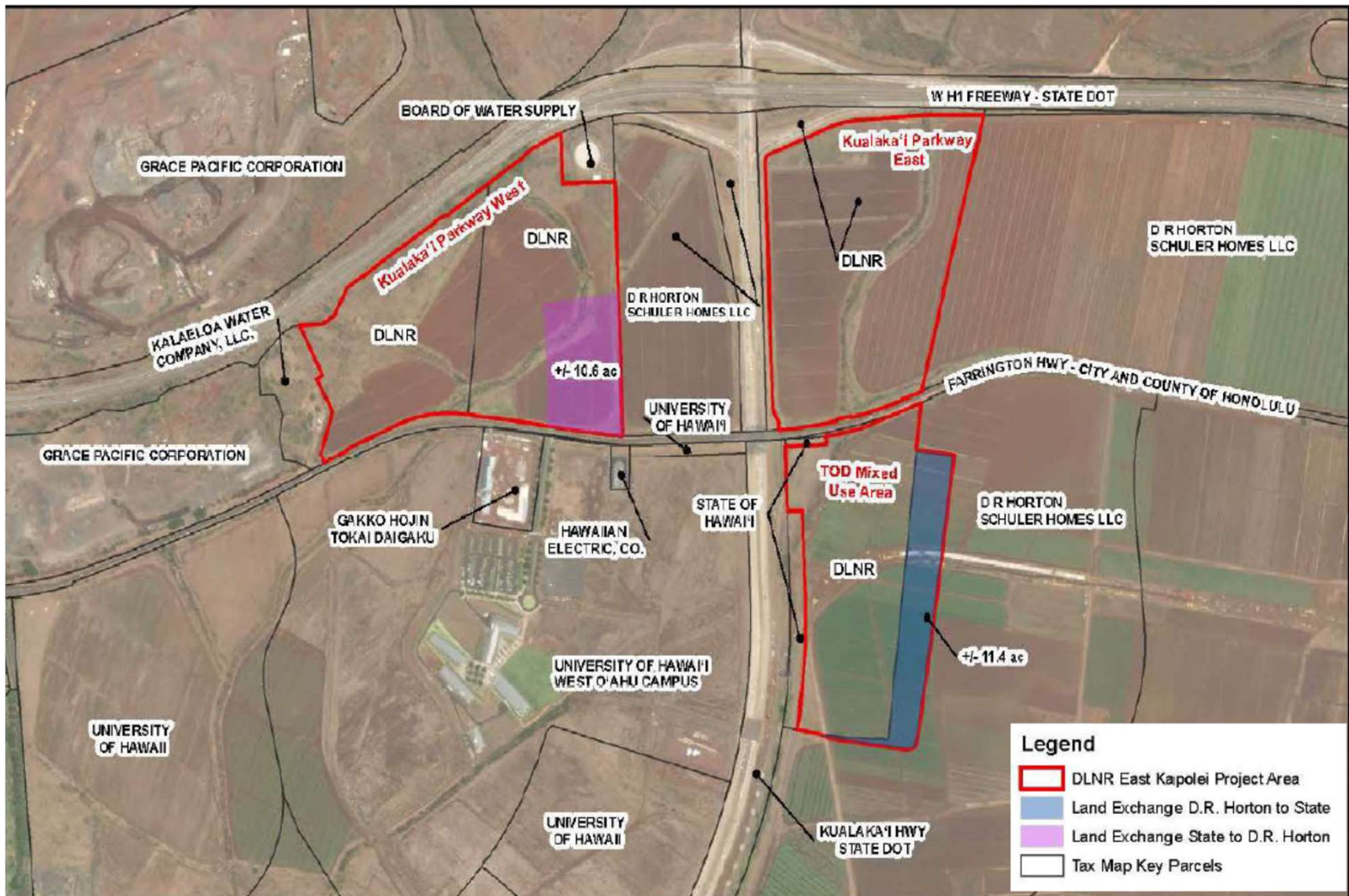


# DLNR East Kapolei Project

Ian Hirokawa

DLNR Land Division

[Ian.C.Hirokawa@hawaii.gov](mailto:Ian.C.Hirokawa@hawaii.gov)



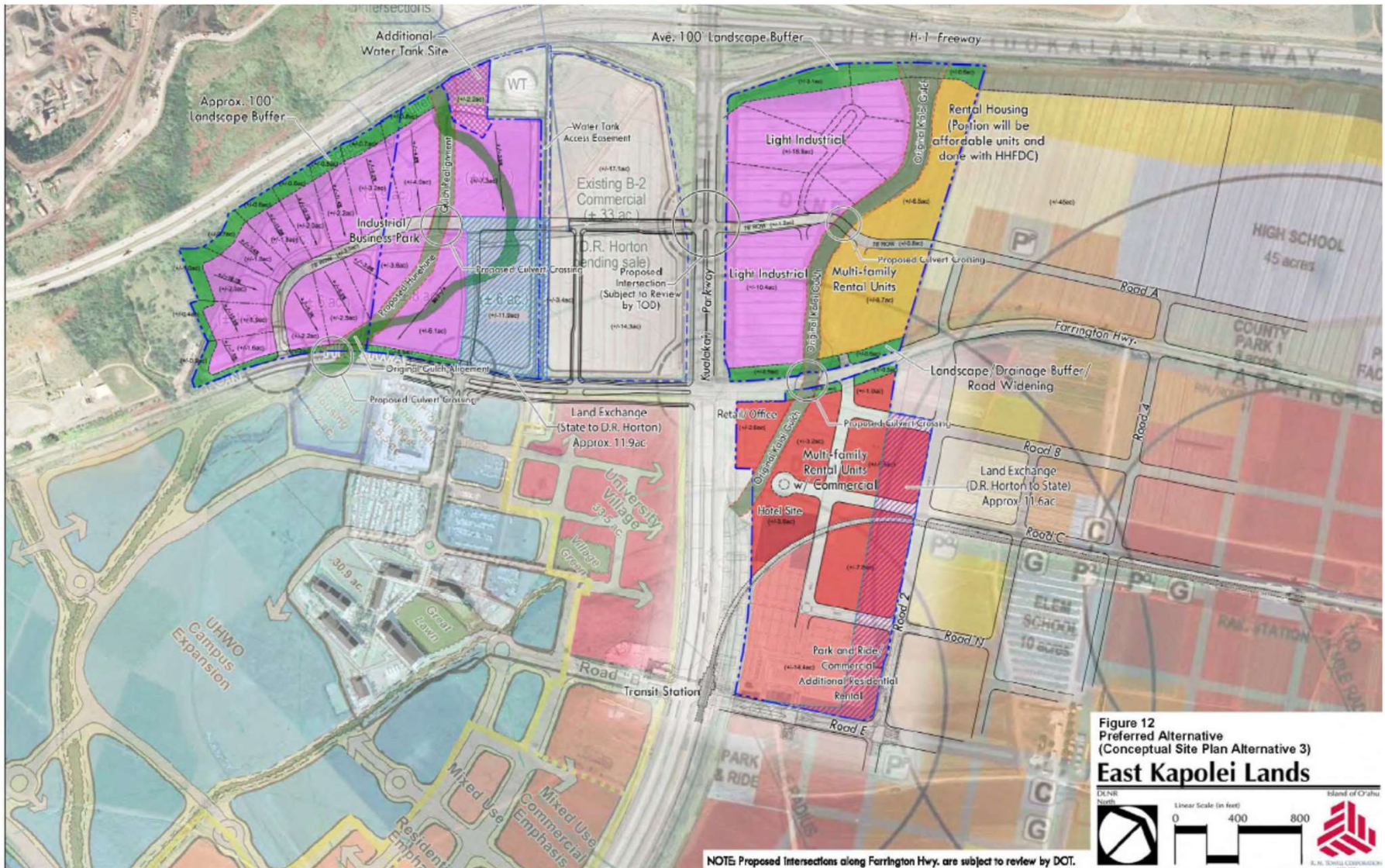


Figure 12  
Preferred Alternative  
(Conceptual Site Plan Alternative 3)  
**East Kapolei Lands**

DNR  
North

Linear Scale (in feet)  
0 400 800

State of Hawaii  
BUREAU OF LAND MANAGEMENT

NOTE: Proposed Intersections along Farrington Hwy. are subject to review by DOT.

# Proposed Residential Developments

- Phase 1- Keone`ae Station Area, TMK (1) 9-1-017:097

Transit oriented, mixed use hub with proposed commercial, retail, hotel, medical and rental housing.

- Phase 2- Kualaka`i Parkway East Area, TMK (1) 9-1-018:014

Proposed light industrial uses and additional rental housing.

## Project Status:

- Strategic Development Plan approved by the Board of Land and Natural Resources on October 23, 2020
- Release of funds for Environmental Impact Statement approved by Budget and Finance and Governor

## Next Steps:

- Finalize Strategic Development Plan
- Procurement and Contract for EIS
- Land acquisition/exchange with DR Horton
- Long term land dispositions with HART for guideway and Park and Ride facility
- Meet with other agencies to explore potential collaborative projects
- Work with DOT Highways regarding Farrington Highway widening project

## Outstanding Issues

- Address infrastructure needs
- Approval of East Kapolei Neighborhood TOD Plan/Zoning