



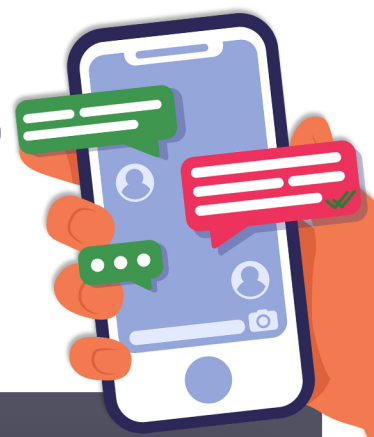
GEORGIA COVID-19

Emotional Support Line

Everyday 8am - 11pm

866-399-8938

TEXT OR CALL US



FRONTLINE HEALTHCARE WORKERS

In an effort to support the frontline workers who have taken such great care of our state, the Georgia COVID-19 Emotional Support Line provides free and confidential assistance to callers needing emotional support, referrals or resource information as a result of the COVID-19 pandemic. During these hard times, many have been left to manage their emotions alone. Our mental health professionals are here to help.

A partnership between the Georgia Department of Behavioral Health and Developmental Disabilities, Beacon Health Options, and Behavioral Health Link.



Georgia
Department of
Behavioral Health
& Developmental
Disabilities

