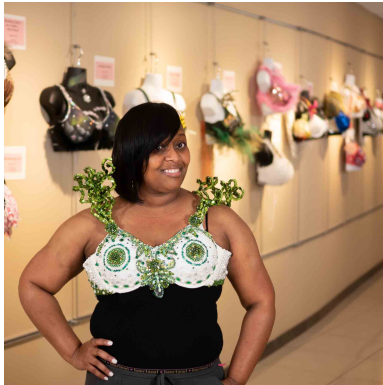


Attached Photo: (L to R): Tiffany Alexander, CC-SLP, speech pathologist, Rehabilitation Services, Southeast Georgia Health System, modeling the 1<sup>st</sup> place bra, “Emeralds, Diamonds and Pearls”; Logan Mobley, R.N., Emergency Care Center, Southeast Georgia Health System, modeling the 2<sup>nd</sup> place bra, “Each Day Comes Bearing its Own Gifts Untie the Ribbons”. **Contact:** Laura Young, director, Marketing & Public Relations; laura.young@sghs.org, 912-466-2148

## ARTrageous Bras Raises More Than \$22,000 for Cancer Care Programs



BRUNSWICK, Georgia: November 13, 2020 – The Southeast Georgia Health System Foundation concluded its annual ARTrageous Bras fundraiser on Friday, Nov. 6, with a virtual auction. This year’s event, which included 43 incredibly designed bra entries, raised more than \$22,000 for the Health System’s cancer care programs.

Developed to help increase breast cancer awareness, ARTrageous Bra entries were designed by Health System team members, local businesses and community members. The bras were on display at the Brunswick and Camden campuses throughout October and the Foundation collected \$1 votes to determine the top 10 favorite bras.

The live auction event was a little different this year with the bras being modeled virtually; however it did not disappoint. Health System models Tiffany Alexander, CC-SLP, speech pathologist, Rehabilitation Services and Emergency Care Center-Brunswick team members Sarah Bessent, R.N.; Jana Clary, R.N.; Gina Copeland, R.N., director; Mallory Knight, unit coordinator; Logan Mobley, R.N.; and Josie Spivey, R.N., showcased the top 10 bras online, and the remaining bras were featured in a silent virtual auction.

The top 10 included:

1. “Emeralds, Diamonds & Pearls...We Value Our Girls” created by The Brunswick “GA” Chapter of Links, Inc. Health and Human Services Facet, raising more than \$1,900 in \$1 votes.
2. “Each Day Comes Bearing its Own Gifts Untie the Ribbons – Ruth Ann Schabacker” created by Larry L. Bryson Architect, P.C., raising more than \$1,700 in \$1 votes.

3. “Angel of Hope – May the Wings of an Angel Bring You Hope” created by Parker & Pennington Dentistry.
4. “Joy in Supporting a Cure for Breast Cancer!” created by Alpha Kappa Alpha Sorority, Inc. Zeta Iota Omega Chapter.
5. “Belle” created by Emmy Parker Temples.
6. “Mom” created by McKenzie Dewitt.
7. “Keep America Great” created by Ashley Tollison.
8. “Beauty Beyond Scars – Representing Women Who Have Been Through the Battle” created by Alicia Taylor, mammography, Southeast Georgia Health System Camden Campus.
9. “The Fierce Bear Hug Bra” created by Fierce Strategy + Creative.
10. “Alaskan Dream” created by Angi Tucker.

“Awareness is critical for early detection of breast cancer. ARTrageous Bras is a creative, attention grabbing fundraiser and a visual reminder for all to remember to take care of their breast health,” says Krista Robitz, director, Development, Southeast Georgia Health System Foundation. “We are extremely appreciative of all the enthusiasm from the participants, sponsors, voters and community.”

ARTrageous Bras sponsors included **Survivor:** Robins & Morton. **Champion:** Alpha Kappa Alpha Sorority, Incorporated, Zeta Iota Omega Chapter; Bulldawg Illustrated; Heartland EMS, Inc.; Hurt Norton & Associates and Parker & Pennington Dentistry. **Fighter:** Coastal Shopper & News; Emmy Parker Temples; Fierce Strategy + Creative; Hospice of the Golden Isles and Larry L. Bryson, Architect, P.C.

For more information, call the Southeast Georgia Health System Foundation at 912-466-3360 or email [krobitz@sghs.org](mailto:krobitz@sghs.org)

**ABOUT SOUTHEAST GEORGIA HEALTH SYSTEM**

Southeast Georgia Health System is a not-for-profit health system comprised of two acute care hospitals, two long term care facilities, two comprehensive Cancer Care Centers and multiple specialty care centers, including orthopaedic and spine care, joint replacement, breast care, maternity, outpatient rehabilitation, sleep management and wound care. The Brunswick Campus Cancer Care Center is accredited by the American College of Surgeons Commission on Cancer and offers the only CyberKnife® M6 with MLC technology in Georgia. Additionally, the Southeast Georgia Physician Associates medical group includes more than 140 providers working in 20 different medical specialties at more than 50 locations. The Health System is part of Coastal Community Health, a regional affiliation between Baptist Health and Southeast Georgia Health System forming a highly integrated hospital network focused on significant initiatives designed to enhance the quality and value of care provided to our contiguous communities. In 2020, the Brunswick Campus was rated High Performing in COPD and Heart Failure by the U.S. News & World Report. For more information, visit [sghs.org](http://sghs.org).