

## FAQ's

### **Can you retrieve a list of properties by entering a Postcode only using UKDL Locators?**

No unfortunately you cannot, you can however search by building name/number and postcode.

If you look around at how we search for addresses there are many different approaches sites take. Some will give you long lists of addresses for a postcode and you scroll and choose the one you want, others ask for a house number and postcode and will then return the address.

ArcGIS locators allow you to do that but are designed around the idea that it will suggest results to you as you type your address. This approach will usually get you to your specific address faster than searching for one element and drilling down through multiple results.

It is different to how some people used searching with LocatorHub, but that usually needed custom code and widgets building to handle long lists of results.

If you want to get a result for a postcode without a house number or name then you can use something like the World geocoding service or the OS Open Names Locator. These can also be built into composite locators that mean it will search your address data first but if it doesn't find a result can return results from that instead.

### **Can you search by Postcode only using UKDL Locators?**

No these locators will not return a record just for a postcode, however they could be included in a composite locator with something like the OS Open Names locator which will return a record for a postcode.

### **What are my options for Northern Ireland addressing?**

We are looking to introduce OS AddressBase Premium Islands into UKDL (targeted for the release in Q2 2023). The alternative is to use the OS Places API which includes Northern Ireland data but is only available for single address searching. OS AddressBase Premium Islands is now included in the PSGA agreement.

### **What infrastructure do I need to be able to publish ArcGIS Locators?**

To publish any ArcGIS locator (.loc), whether that is created by UKDL or not, it does require either a stand-alone server or ArcGIS Enterprise. For publishing using a stand-alone server see the documentation [here](#). You can also share to ArcGIS Enterprise but it must have at least one federated server, it uses a different tool to publishing to a stand-alone server, see the documentation [here](#).

### How often is the OS Places API updated?

It is updated every day which is a great improvement from the 6 week cycle you normally get with the downloads of AddressBase data. Although it is updated daily it can take 3-5 working days for submitted data to make in into the API due to the validation process. Data frequency for Scotland and other islands might differ due to the delivery schedule.

### In the OS Places API they have enabled filtering by custodians code. Is this coming in the OS Places API Connector?

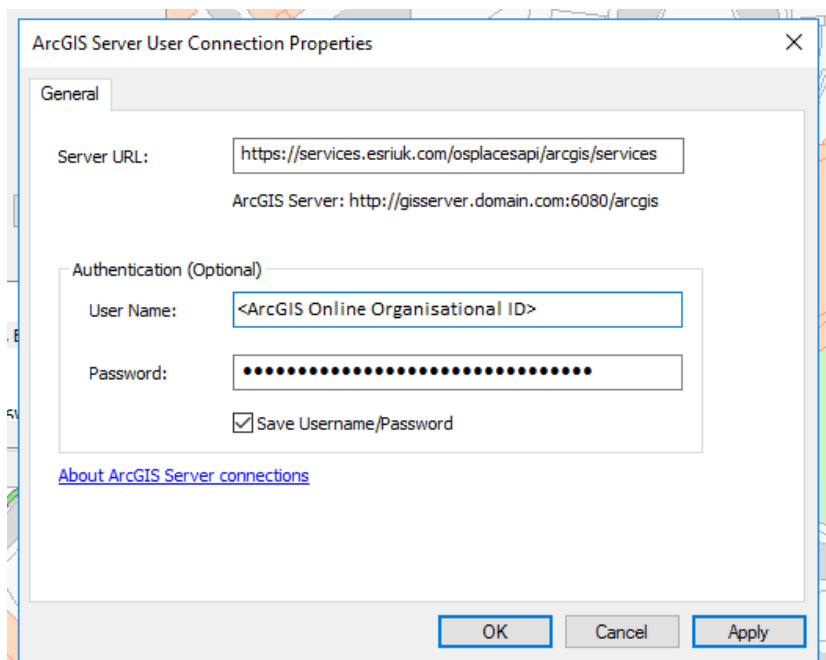
Yes this is coming we expect this to be implemented by the end of March 2023. You will then be able to filter the API by custodian code(s), country or logical status.

### Can I use ArcGIS Locators (published in ArcGIS Pro) in ArcMap?

Yes you can however some of the functionality is downgraded such as the suggestions will not work in ArcMap.

### Can I use the OS Places API in ArcMap?

Yes you can, however some of the functionality such as the suggestions is not available in ArcMap. In order to use the OS Places API Connector within ArcMap you need to add it as a GIS Server connection. Entering in the Server URL as: <https://services.esriuk.com/osplacesapi/arcgis/services/> and your ArcGIS Online organisational id as the username and your OS API Key as the password.



**Where can I get UK Data Loader from?**

You must purchase UKDL from Esri UK, please speak to your CSM for more information on this. For more information on UKDL please see our webpages [here](#), which is also where you can download the toolbox from. Once purchased you will be provided with the password to unlock the zip file.

**How do we apply Change Only Updates (COU's) to our locators?**

To apply any update to the locator it does require you to rebuild the locator, as the data is stored in the locator itself. We have created some scripts which automate this process, if this is something you are interested in then please [contact us](#)

**What do I use the BNG locator for?**

The Esri UK [BNG locator](#) is free to use and you would use it if you wanted to look up grid references or coordinates , examples include searching for a XY: 123456, 654321; a Grid squares: TL44; as sub tile: TQ1234 or; a quadrant: SN1234SE.

**Do locators published as geocode services only have full functionality if published on ArcGIS Server 11 onwards?**

For the latest enhancements such as subaddress summaries, improved suggestions, partial address search functionality and improved matching we advise you build the ArcGIS Locators in the latest version of ArcGIS Pro and publish with the latest version of ArcGIS Server or Enterprise. If you are only using the locator locally and not publishing, this latest functionality is available within ArcGIS Pro at the latest version, but to utilise this once published you do need the latest version of ArcGIS Enterprise or Server.

### What is the approximate size of a Locator for AddressBase Premium for GB?

For AddressBase Premium 7 locators are created, with two of these being composite locators. The list of these locators are below along with the approximate size for a GB Locator:

Locator Name	Locator Description	Size (approximately)
abprem_la	All current and alternative Local Authority addresses.	20.4GB
abprem_la_hi	All historic Local Authority Addresses.	3.3GB
abprem_la_pv	All provisional Local Authority Addresses.	0.5GB
abprem_rm	All addresses supplied by the Royal Mail.	14.8GB
abprem_uprn	All addresses across Local Authority (current, historical, provisional) and Royal Mail searchable by UPRN.	28.6GB
os_addressbasepremium_all_address_locator	Composite locator used to search all the records in the data. It is a composite of the following locators: 1.abprem_rm 2.abprem_la 3.abprem_la_hi 4.abprem_la_pv	39GB (as it includes the locators in the description)
os_addressbasepremium_curr_address_locator	Composite locator used to search for only current addresses. It is a composite of the following locators: 1.abprem_rm 2.abprem_la	35.2GB (as it includes the locators in the description)

### Can I use ArcGIS Locators in custom applications?

You can use ArcGIS Locators throughout the Esri system but as the geocoding services are exposed using the ArcGIS Rest API you can also use them within other custom applications written in other technologies or frameworks such as .NET or JavaScript.

### Can I search by UPRN in ArcGIS Locators created using UKDL?

By default you can search by UPRN in all of the locators created by UKDL. We have specific UPRN locators as well for LLPG, CAG and AddressBase Premium where we merge together datasets to make it easier for you to search on UPRN in a single locator.

### Is Esri doing any integration with 3<sup>rd</sup> parties such as Jadu?

We are currently working with our 3<sup>rd</sup> parties, we are working closely with Jadu to allow for integration, we hope to update our customers on the progress of this very soon.